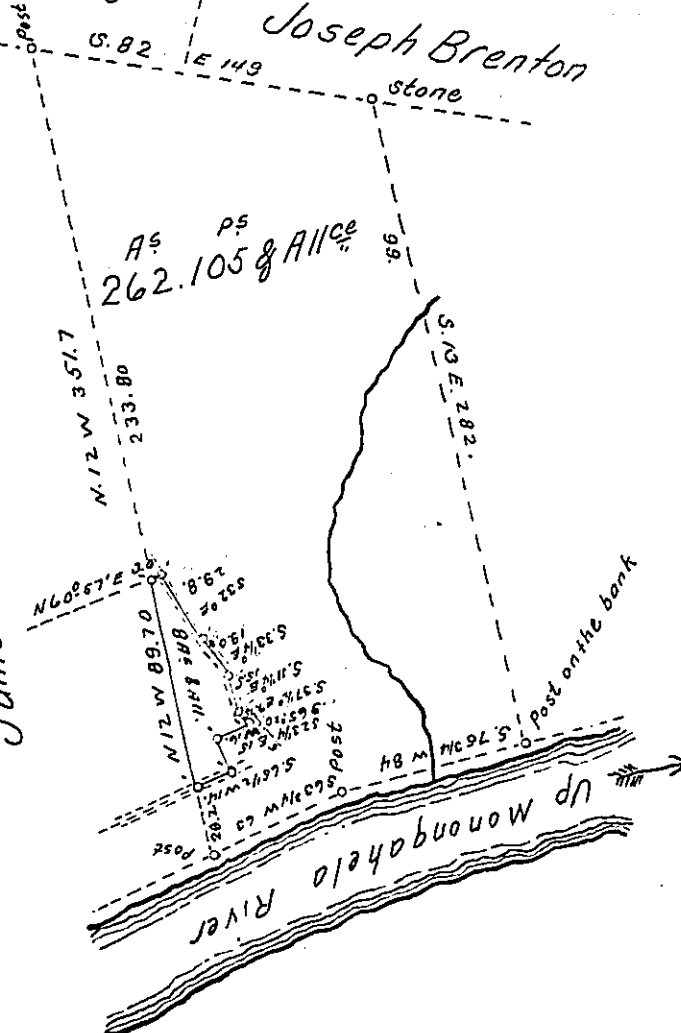


Formerly  
Joseph Brenton  
now  
Richard Watkins

Joseph Brenton

James Dorsey's Claim



*the Borough of Centreville (formerly a part of*  
*A Draft of a tract of land situated in the Township of East Bethlehem and*  
*and County of Washington, containing Eight acres, — perches and allowance of six per*  
*cent. for roads, etc. ~~Surveyed for~~ — ~~the~~ — ~~day of~~ — ~~it~~ it being part of a larger tract*  
*containing two hundred and sixty two acres, one hundred and five perches and*  
*allowance, originally surveyed in pursuance of a warrant granted to John Kible*  
*dated the thirteenth day of May 1796*

To James W. Latta, Esq. } Geo. D. Jenkins  
 Secretary of Internal Affairs } County Surveyor.

*Note. When this form is used the County Surveyor should indicate by dotted lines the*  
*remainder of the original survey, thus showing the location of the part returned. See*  
*paragraph nine of instructions to County Surveyors.*

**IN TESTIMONY** that the above is a copy of the original remaining on file in  
 the Department of Internal Affairs of Pennsylvania, made  
 conformably to an Act of Assembly approved the 16th day of  
 February, 1833, I have hereunto set my Hand and caused  
 the Seal of said Department to be affixed at Harrisburg,  
 this fourth day of August 1905.

*James W. Latta*  
 Secretary of Internal Affairs.